



VILLAGE ESTATES

• EST.1993 •



93 Main Road, Sidcup, Kent DA14 6ND

Tel: 0208 302 1002

www.village-estates.com

Email: sidcup@village-estates.com



LARGE CONVERTED LOFT

EN SUITE SHOWER ROOM

CLOSE TO POPULAR LOCAL SHOPS

VICTORIAN RESIDENCE

FOUR DOUBLE BEDROOMS

0.8 MILE - SIDCUP TRAIN STATION

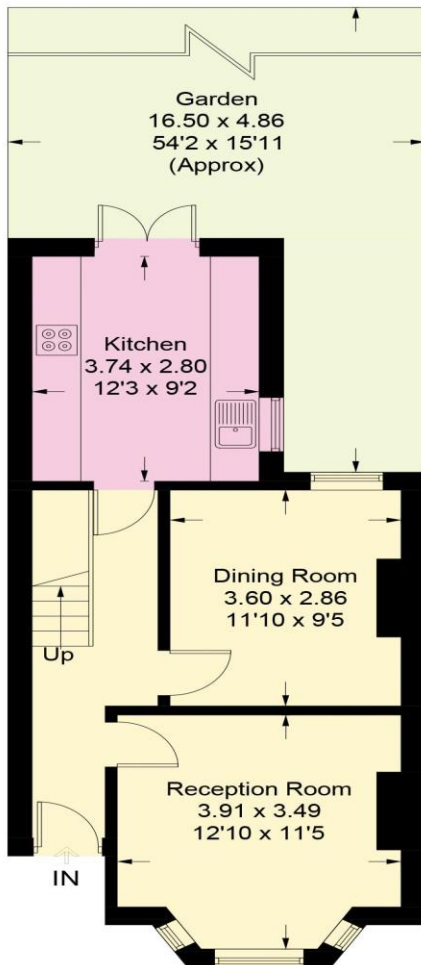


52 Bedford Road
Sidcup, DA15 7JP

Guide Price £575,000-£600,000

**** Guide Price £575,000-£600,000 ****

Victorian end of terrace house possessing charm and contemporary features. Positioned at the end of Bedford Road convenient for walking to Sidcup train station, Longlands primary school and local shops.

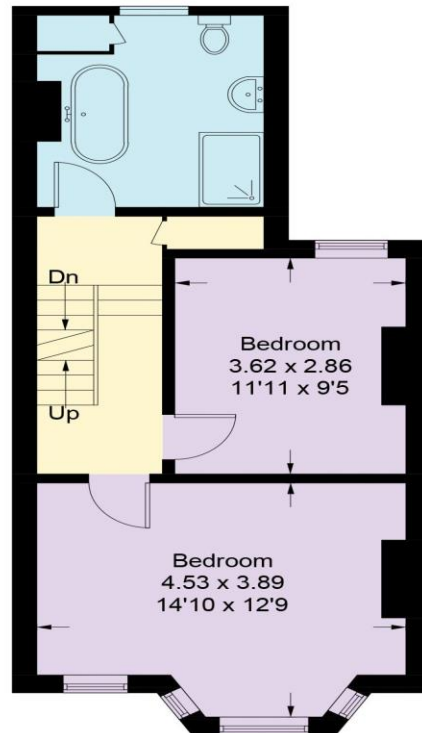


Ground Floor

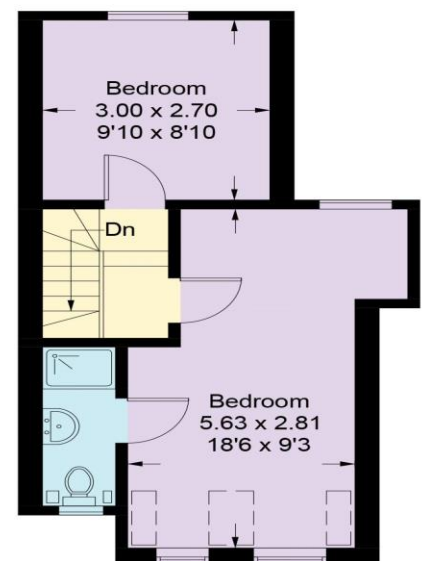
Bedford Road, DA15

Approximate Gross Internal Area
118 sq m / 1270 sq ft

 = Reduced headroom below 1.5m / 5'0



First Floor



Second Floor

CURRENT ENERGY EFFICIENCY RATING 'TBC'

CONSUMER PROTECTION FROM UNFAIR TRADING REGULATIONS 2008

Please note that any services, heating system or appliances have not been tested, and no warranty can be given or implied as to their working order. You are advised to obtain verification from your solicitor or surveyor. References to the tenure of a property are based on information supplied by the seller. We have not had sight of the title documents and a buyer is advised to obtain verification from their solicitor. Items shown in photographs are not included unless specifically mentioned within the sales particulars, but may be available by separate negotiation. Whilst every attempt has been made to ensure the accuracy of the floor plan contained here, measurements of doors, windows, rooms and any other items are approximate and no responsibility is taken for any error, omission, or mis-statement. We advise you to book an appointment to view before embarking on any journey to see a property, and check its availability. The accuracy of these details are not guaranteed and they do not form part of the contract.